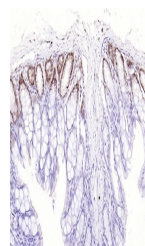


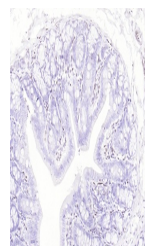
Product Datasheet

ATF2 (phospho-Thr71) antibody (orb559192)

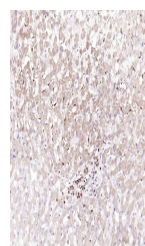
Description	ATF2 (phospho-Thr71) antibody
Species/Host	Rabbit
Reactivity	Human, Mouse, Rat
Conjugation	Unconjugated
Tested Applications	IHC-P, WB
Immunogen	KLH conjugated synthesised phosphopeptide derived from human ATF2 around the phosphorylation site of Thr71 (TP(p-T)PT)
Target	phospho-ATF2 (Thr71)
Preservatives	0.01M TBS(pH7.4) with 1% rAlbumin, 0.03% Proclin300 and 50% Glycerol.
Form/Appearance	Liquid
Concentration	1mg/ml
Storage	Maintain refrigerated at 2-8°C for up to 2 weeks. For long term storage store at -20°C in small aliquots to prevent freeze-thaw cycles.
Note	For research use only
Isotype	IgG
Clonality	Recombinant
MW	54 kDa
Uniprot ID	P15336
Dilution Range	WB=1:500-1000, IHC-P=1:50-200
Expiration Date	12 months from date of receipt.



IHC-P analysis of mouse colon using phos...



IHC-P analysis of rat colon using phosph...



IHC-P analysis of human liver using phos...