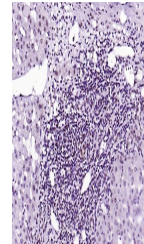


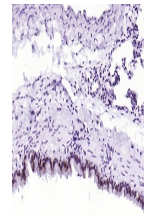
Product Datasheet

STAT1 (phospho-Ser727) antibody (orb559173)

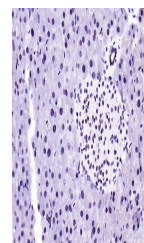
Description	STAT1 (phospho-Ser727) antibody
Species/Host	Rabbit
Reactivity	Human, Mouse, Rat
Conjugation	Unconjugated
Tested Applications	IHC-P, WB
Immunogen	KLH conjugated Synthesised phosphopeptide derived from human STAT1 around the phosphorylation site of Ser727 (PM(p-S)PE)
Target	phospho-STAT1 (Ser727)
Preservatives	0.01M TBS(pH7.4) with 1% rAlbumin, 0.03% Proclin300 and 50% Glycerol.
Form/Appearance	Liquid
Concentration	1mg/ml
Storage	Maintain refrigerated at 2-8°C for up to 2 weeks. For long term storage store at -20°C in small aliquots to prevent freeze-thaw cycles.
Note	For research use only
Isotype	IgG
Clonality	Recombinant
MW	87 kDa
Uniprot ID	P42224
Dilution Range	WB=1:500-1000, IHC-P=1:50-200
Expiration Date	12 months from date of receipt.



IHC-P analysis of human liver using phos...



IHC-P analysis of rat lung using phospho...



IHC-P analysis of mouse pancreas using p...