
Product Datasheet

Acetyl CoA Carboxylase 1(ACC1) antibody (orb559159)

Description

Acetyl CoA Carboxylase 1(ACC1) antibody

Species/Host

Rabbit

Reactivity

Human, Mouse, Rat

Conjugation

Unconjugated

Tested Applications

IHC-P, WB

Immunogen

KLH conjugated synthetic peptide derived from human Acetyl CoA Carboxylase 1(ACC1)

Target

ACACA

Preservatives

0.01M TBS(pH7.4) with 1% rAlbumin, 0.03% Proclin300 and 50% Glycerol.

Form/Appearance

Liquid

Concentration

1mg/ml

Storage

Maintain refrigerated at 2-8°C for up to 2 weeks. For long term storage store at -20°C in small aliquots to prevent freeze-thaw cycles.

Note

For research use only

Isotype

IgG

Clonality

Recombinant

MW

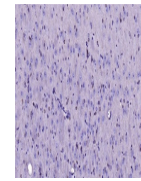
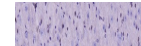
265 kDa

Uniprot ID
[Q13085](https://www.uniprot.org/entry/Q13085)
Dilution Range

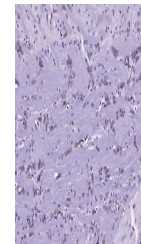
WB=1:500-1000, IHC-P=1:50-200

Expiration Date

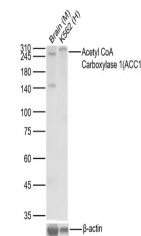
12 months from date of receipt.



IHC-P analysis of mouse brain using Acetyl...



IHC-P analysis of rat brain using Acetyl...



Western blot:Lane 1:Mouse Brain;Lane 2:H...