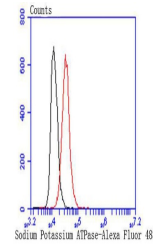


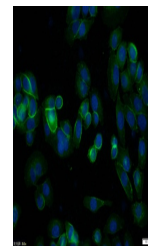
Product Datasheet

Sodium Potassium ATPase antibody (orb559158)

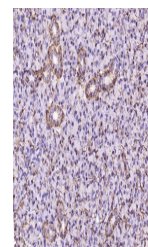
Description	Sodium Potassium ATPase antibody
Species/Host	Rabbit
Reactivity	Human
Conjugation	Unconjugated
Tested Applications	IF, IHC-Fr, IHC-P, WB
Immunogen	Recombinant human Sodium Potassium ATPase aa 1-100
Target	Sodium Potassium ATPase(Loading Control)
Preservatives	0.01M TBS(pH7.4) with 1% rAlbumin, 0.03% Proclin300 and 50% Glycerol.
Form/Appearance	Liquid
Concentration	1mg/ml
Storage	Maintain refrigerated at 2-8°C for up to 2 weeks. For long term storage store at -20°C in small aliquots to prevent freeze-thaw cycles.
Note	For research use only
Isotype	IgG
Clonality	Recombinant
MW	113 kDa
Uniprot ID	P05023
Dilution Range	WB=1:500-2000, IHC-P=1:50-100, ICC=1:50, Flow-Cyt=1:50, IHC-F=1:50-100, IF=1:50-100
Expiration Date	12 months from date of receipt.



Flow cytometry of HeLa. Primary Antibody ...



ICC analysis of MCF7 cell using Sodium P...



IHC-P analysis of rat pancreas using Sod...