
Product Datasheet

SMAD5 (phospho-Ser463 + Ser465) antibody (orb559123)

Description

SMAD5 (phospho-Ser463 + Ser465) antibody

Species/Host

Rabbit

Reactivity

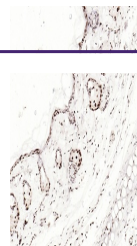
Human, Mouse, Rat

Conjugation

Unconjugated

Tested Applications

IHC-P

Applications


IHC-P analysis of rat skin using phospho...

Immunogen

KLH conjugated synthesised phosphopeptide derived from human SMAD5 around the phosphorylation site of Ser463 + Ser465 (IS(p-S)V(p-S))

Target

phospho-SMAD5 (Ser463 + Ser465)

Preservatives

0.01M TBS(pH7.4) with 1% rAlbumin, 0.03% Proclin300 and 50% Glycerol.

Form/Appearance

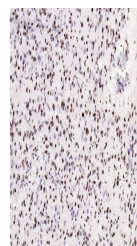
Liquid

Concentration

1mg/ml

Storage

Maintain refrigerated at 2-8°C for up to 2 weeks. For long term storage store at -20°C in small aliquots to prevent freeze-thaw cycles.



IHC-P analysis of human brain using phos...

Note

For research use only

Isotype

IgG

Clonality

Recombinant

MW

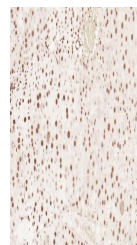
52 kDa

Uniprot ID
[Q99717](https://www.uniprot.org/uniprot/Q99717)
Dilution Range

IHC-P=1:50-200, WB=1:500-2000, IHC-F=1:50-200, ICC=1:50-200, IF=1:50-200

Expiration Date

12 months from date of receipt.



IHC-P analysis of mouse liver using phos...