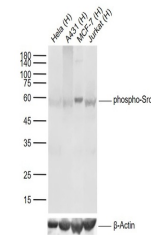


## Product Datasheet

### Src (phospho-Tyr419) antibody (orb559122)

<b>Description</b>	Src (phospho-Tyr419) antibody
<b>Species/Host</b>	Rabbit
<b>Reactivity</b>	Human
<b>Conjugation</b>	Unconjugated
<b>Tested Applications</b>	FC, WB
<b>Immunogen</b>	KLH conjugated Synthesised phosphopeptide derived from human Src around the phosphorylation site of Tyr419 (NE(p-Y)TA)
<b>Target</b>	phospho-Src (Tyr419)
<b>Preservatives</b>	0.01M TBS(pH7.4) with 1% rAlbumin, 0.03% Proclin300 and 50% Glycerol.
<b>Form/Appearance</b>	Liquid
<b>Concentration</b>	1mg/ml
<b>Storage</b>	Maintain refrigerated at 2-8°C for up to 2 weeks. For long term storage store at -20°C in small aliquots to prevent freeze-thaw cycles.
<b>Note</b>	For research use only
<b>Isotype</b>	IgG
<b>Clonality</b>	Recombinant
<b>MW</b>	60 kDa
<b>Uniprot ID</b>	<b>P12931</b>
<b>Dilution Range</b>	WB=1:500-1000, Flow-Cyt=1:50-100, IHC-P=1:100-500, IHC-F=1:50-100, ICC=1:50-100, IF=1:50-100
<b>Expiration Date</b>	12 months from date of receipt.



Western blot: Lane 1: Human HeLa cell; Lane...