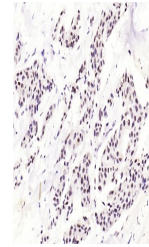


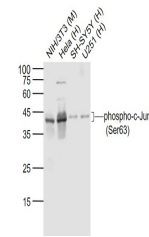
## Product Datasheet

### c-Jun (phospho-Ser63) antibody (orb559120)

<b>Description</b>	c-Jun (phospho-Ser63) antibody
<b>Species/Host</b>	Rabbit
<b>Reactivity</b>	Human, Mouse
<b>Conjugation</b>	Unconjugated
<b>Tested Applications</b>	IHC-P, WB
<b>Immunogen</b>	KLH conjugated Synthesised phosphopeptide derived from human c-Jun around the phosphorylation site of Ser63 (LT(p-S)PD)
<b>Target</b>	phospho-c-Jun (Ser63)
<b>Preservatives</b>	0.01M TBS(pH7.4) with 1% rAlbumin, 0.03% Proclin300 and 50% Glycerol.
<b>Form/Appearance</b>	Liquid
<b>Concentration</b>	1mg/ml
<b>Storage</b>	Maintain refrigerated at 2-8°C for up to 2 weeks. For long term storage store at -20°C in small aliquots to prevent freeze-thaw cycles.
<b>Note</b>	For research use only
<b>Isotype</b>	IgG
<b>Clonality</b>	Recombinant
<b>MW</b>	36 kDa
<b>Uniprot ID</b>	<a href="#">P05412</a>
<b>Dilution Range</b>	WB=1:500-2000, IHC-P=1:50-100
<b>Expiration Date</b>	12 months from date of receipt.



IHC-P analysis of Human esophageal cancer...



Western blot: Lane 1: NIH/3T3 (Mouse) Cell...