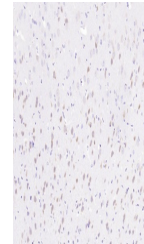


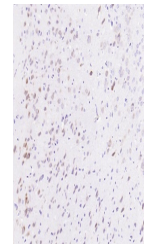
Product Datasheet

eIF4E (phospho-Ser209) antibody (orb559111)

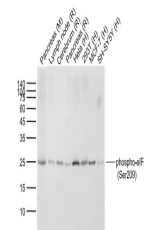
Description	eIF4E (phospho-Ser209) antibody
Species/Host	Rabbit
Reactivity	Human, Mouse, Rat
Conjugation	Unconjugated
Tested Applications	IHC-P, WB
Immunogen	KLH conjugated Synthesised phosphopeptide derived from human eIF4E around the phosphorylation site of Ser209 (SG(p-S)TT)
Target	phospho-eIF4E (Ser209)
Preservatives	0.01M TBS(pH7.4) with 1% rAlbumin, 0.03% Proclin300 and 50% Glycerol.
Form/Appearance	Liquid
Concentration	1mg/ml
Storage	Maintain refrigerated at 2-8°C for up to 2 weeks. For long term storage store at -20°C in small aliquots to prevent freeze-thaw cycles.
Note	For research use only
Isotype	IgG
Clonality	Recombinant
MW	24 kDa
Uniprot ID	P06730
Dilution Range	WB=1:500-2000, IHC-P=1:50-200
Expiration Date	12 months from date of receipt.



IHC-P analysis of mouse brain using phospho-eIF4E antibody.



IHC-P analysis of rat brain using phospho-eIF4E antibody.



Western blot analysis using Anti-phospho-eIF4E (Ser209) antibody.