

---

## Product Datasheet

### Estrogen Receptor Alpha (phospho-Ser118) antibody (orb559110)

**Description**

Estrogen Receptor Alpha (phospho-Ser118)

**Species/Host**

Rabbit

**Reactivity**

Human, Mouse

**Conjugation**

Unconjugated

**Tested Applications**

FC, ICC, IHC-P, WB

**Immunogen**

KLH conjugated Synthesised phosphopeptide derived from human ER alpha around the phosphorylation site of Ser118 (QL(p-S)PF)

**Target**

Phospho-Estrogen Receptor alpha (Ser118)

**Preservatives**

0.01M TBS(pH7.4) with 1% rAlbumin, 0.03% Proclin300 and 50% Glycerol.

**Form/Appearance**

Liquid

**Concentration**

1mg/ml

**Storage**

Maintain refrigerated at 2-8°C for up to 2 weeks. For long term storage store at -20°C in small aliquots to prevent freeze-thaw cycles.

**Note**

For research use only

**Isotype**

IgG

**Clonality**

Recombinant

**MW**

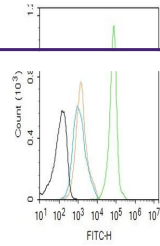
66 kDa

**Uniprot ID**
[P03372](https://www.uniprot.org/uniprot/P03372)
**Dilution Range**

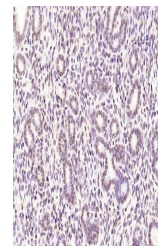
WB=1:200-1000, IHC-P=1:50-100, ICC=1:50, Flow-Cyt=2ug/Test, IHC-F=1:500-100, IF=1:50-100

**Expiration Date**

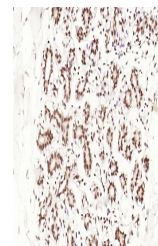
12 months from date of receipt.



Flow cytometry of MCF7. Primary Antibody ...



IHC-P analysis of mouse uterus using Pho...



IHC-P analysis of human breast using Pho...