
Product Datasheet

Glycogen Synthase 1 (phospho-Ser641) antibody (orb559107)

Description

Glycogen Synthase 1 (phospho-Ser641) antibody

Species/Host

Rabbit

Reactivity

Human, Mouse, Rat

Conjugation

Unconjugated

Tested

IHC-P, WB

Applications
Immunogen

KLH conjugated Synthesised phosphopeptide derived from human Glycogen synthase 1 around the phosphorylation site of Ser641 (PA(p-S)VP)

Target

Phospho-Glycogen synthase 1 (Ser641)

Preservatives

0.01M TBS(pH7.4) with 1% rAlbumin, 0.03% Proclin300 and 50% Glycerol.

Form/Appearance

Liquid

Concentration

1mg/ml

Storage

Maintain refrigerated at 2-8°C for up to 2 weeks. For long term storage store at -20°C in small aliquots to prevent freeze-thaw cycles.

Note

For research use only

Isotype

IgG

Clonality

Recombinant

MW

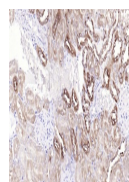
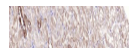
85 kDa

Uniprot ID
P13807
Dilution Range

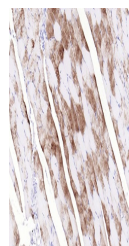
WB=1:1000-2000, IHC-P=1:50-200

Expiration Date

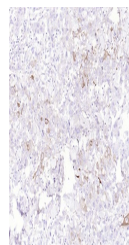
12 months from date of receipt.



IHC-P analysis of mouse kidney using Phos...



IHC-P analysis of rat skeletal muscle us...



IHC-P analysis of human lung carcinoma u...