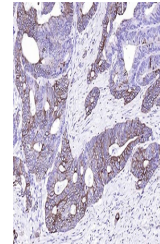


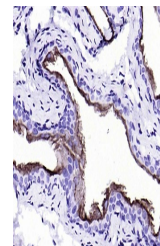
Product Datasheet

CK20 antibody (orb559077)

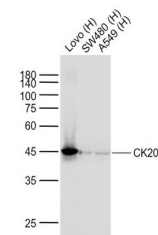
Description	CK20 antibody
Species/Host	Rabbit
Reactivity	Human, Rat
Conjugation	Unconjugated
Tested Applications	IHC-P, WB
Immunogen	Recombinant human Cytokeratin 20 protein, around C-terminal 150aa
Target	CK20
Preservatives	0.01M TBS(pH7.4) with 1% rAlbumin, 0.03% Proclin300 and 50% Glycerol.
Form/Appearance	Liquid
Concentration	1mg/ml
Storage	Maintain refrigerated at 2-8°C for up to 2 weeks. For long term storage store at -20°C in small aliquots to prevent freeze-thaw cycles.
Note	For research use only
Isotype	IgG
Clonality	Recombinant
MW	48 kDa
Uniprot ID	P35900
Dilution Range	WB=1:1000-2000, IHC-P=1:50-200
Expiration Date	12 months from date of receipt.



IHC-P analysis of human colon carcinoma ...



IHC-P analysis of Rat bladder using CK20...



Western blot: Lane 1:Lovo (Human) Cell;La...