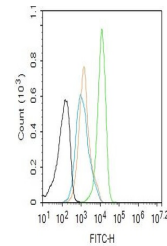


Product Datasheet

GATA3 (phospho-Ser308) antibody (orb559073)

Description	GATA3 (phospho-Ser308) antibody
Species/Host	Rabbit
Reactivity	Human
Conjugation	Unconjugated
Tested Applications	FC, IHC-P, WB
Immunogen	KLH conjugated synthesised phosphopeptide derived from human GATA3 around the phosphorylation site of Ser308 (RL(pS)AA)
Target	phospho-GATA3 (Ser308)
Preservatives	0.01M TBS(pH7.4) with 1% rAlbumin, 0.03% Proclin300 and 50% Glycerol.
Form/Appearance	Liquid
Concentration	1mg/ml
Storage	Maintain refrigerated at 2-8°C for up to 2 weeks. For long term storage store at -20°C in small aliquots to prevent freeze-thaw cycles.
Note	For research use only
Isotype	IgG
Clonality	Recombinant
MW	49 kDa
Uniprot ID	P23771
Dilution Range	WB=1:500-2000, IHC-P=1:50-200, Flow-Cyt=2ug/Test, IHC-F=1:50-200, ICC=1:50-200, IF=1:50-200
Expiration Date	12 months from date of receipt.



Flow cytometry of MCF7.Primary Antibody ...