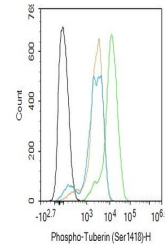


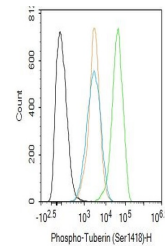
Product Datasheet

Tuberin (phospho-Ser1418) antibody (orb5589)

| | |
|----------------------------|---|
| Description | Tuberin (phospho-Ser1418) antibody |
| Species/Host | Rabbit |
| Reactivity | Human, Mouse, Rat |
| Conjugation | Unconjugated |
| Tested Applications | FC, IHC-P |
| Immunogen | KLH conjugated Synthesised phosphopeptide derived from human Tuberin around the phosphorylation site of Ser1418 (AR(p-S)QS) |
| Target | Phospho-Tuberin (Ser1418) |
| Preservatives | 0.01M TBS(pH7.4) with 1% rAlbumin, 0.03% Proclin300 and 50% Glycerol. |
| Form/Appearance | Liquid |
| Concentration | 1mg/ml |
| Storage | Maintain refrigerated at 2-8°C for up to 2 weeks. For long term storage store at -20°C in small aliquots to prevent freeze-thaw cycles. |
| Note | For research use only |
| Isotype | IgG |
| Clonality | Polyclonal |
| MW | 200 kDa |
| Uniprot ID | P49815 |
| Dilution Range | IHC-P=1:100-500, Flow-Cyt=1ug/Test, IHC-F=1:100-500, IF=1:100-500, ELISA=1:5000-10000 |
| Expiration Date | 12 months from date of receipt. |



Flow cytometry of HeLa(black line).Prima...



Flow cytometry of NIH/3T3(black line).Pr...