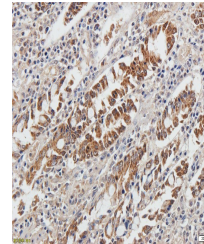


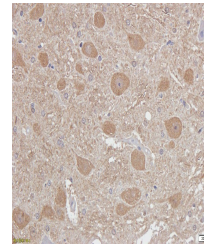
Product Datasheet

Autotaxin antibody (orb55871)

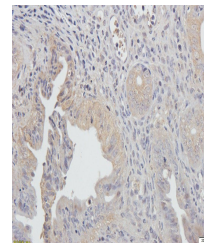
Description	Autotaxin antibody
Species/Host	Rabbit
Reactivity	Human, Mouse, Rat
Conjugation	Unconjugated
Tested Applications	IHC-P, WB
Immunogen	KLH conjugated synthetic peptide derived from human Autotaxin. Please contact us for the exact immunogen sequence. The peptide is available as orb13142.
Target	Autotaxin
Form/Appearance	10 mM PBS, 0.02% sodium azide
Concentration	- 100 µg (in 200 µl): 0.5 mg/ml- 200 µg (in 400 µl): 0.5 mg/ml
Storage	Store at 4°C for up to two weeks. For long term storage, aliquot and store at -20°C, avoid freeze/thaw cycles.
Note	For research use only
Isotype	IgG
Clonality	Polyclonal
Purity	Polyclonal antibodies are purified by peptide affinity chromatography
MW	53 kDa
Uniprot ID	Q13822
Entrez	8685
Dilution Range	WB: 1-200-2000, IHC-P: 1:100-500
Expiration Date	12 months from date of receipt.



IHC-P image of pig small intestine tissue...



Immunohistochemical staining of paraffin...



IHC-P staining of mouse ovary tissue using...