

---

## Product Datasheet

### SPC18 antibody (orb55870)

**Description**

SPC18 antibody

**Species/Host**

Rabbit

**Reactivity**

Human, Mouse, Rat

**Conjugation**

Unconjugated

**Tested Applications**

IHC-P, WB

**Immunogen**

KLH conjugated synthetic peptide derived from human SPC18. Please contact us for the exact immunogen sequence. The peptide is available as orb394002.

**Target**

SPC18

**Form/Appearance**

10 mM PBS, 0.02% sodium azide

**Concentration**

- 100 µg (in 200 µl): 0.5 mg/ml- 200 µg (in 400 µl): 0.5 mg/ml

**Storage**

Store at 4°C for up to two weeks. For long term storage, aliquot and store at -20°C, avoid freeze/thaw cycles.

**Note**

For research use only

**Isotype**

IgG

**Clonality**

Polyclonal

**Purity**

Polyclonal antibodies are purified by peptide affinity chromatography

**MW**

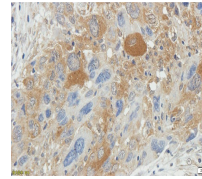
53 kDa

**Uniprot ID**
[P67812](#)
**NCBI**
[006761](#), [006770](#)
**Entrez**
[8685](#)
**Dilution Range**

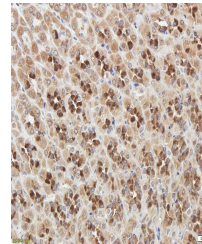
WB: 1-200-2000, IHC-P: 1:100-500

**Expiration Date**

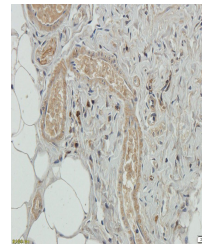
12 months from date of receipt.



Immunohistochemical staining of paraffin...



IHC-P staining of rat stomach tissue usi...



IHC-P staining of rat lung tissue using ...