
Product Datasheet

PLA2G5 antibody (orb55869)

Description

PLA2G5 antibody

Species/Host

Rabbit

Reactivity

Human, Mouse, Rat

Conjugation

Unconjugated

Tested Applications

IHC-P, WB

Immunogen

KLH conjugated synthetic peptide derived from human PLA2G5. Please contact us for the exact immunogen sequence. The peptide is available as orb394001.

Target

PLA2G5

Form/Appearance

10 mM PBS, 0.02% sodium azide

Concentration

- 100 µg (in 200 µl): 0.5 mg/ml- 200 µg (in 400 µl): 0.5 mg/ml

Storage

Store at 4°C for up to two weeks. For long term storage, aliquot and store at -20°C, avoid freeze/thaw cycles.

Note

For research use only

Isotype

IgG

Clonality

Polyclonal

Purity

Polyclonal antibodies are purified by peptide affinity chromatography

MW

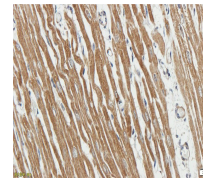
15.6 KDa

Uniprot ID
[P39877](#)
NCBI
[006761](#), [006770](#)
Entrez
[8685](#)
Dilution Range

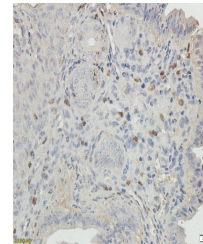
WB: 1-200-2000, IHC-P: 1:100-500

Expiration Date

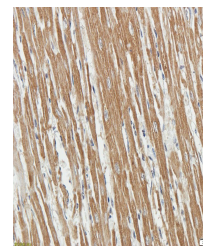
12 months from date of receipt.



Immunohistochemical staining of guinea p...



Immunohistochemical staining of mouse ov...



IHC-P image of guinea pig heart tissue u...