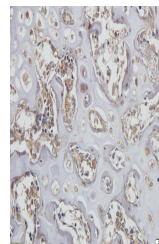


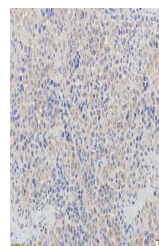
Product Datasheet

CD62E antibody (orb55868)

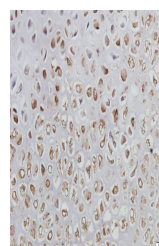
Description	CD62E antibody
Species/Host	Rabbit
Reactivity	Human, Mouse, Rat
Conjugation	Unconjugated
Tested Applications	IHC-P, WB
Immunogen	KLH conjugated synthetic peptide derived from human CD62E. Please contact us for the exact immunogen sequence. The peptide is available as orb394000.
Target	CD62E
Form/Appearance	10 mM PBS, 0.02% sodium azide
Concentration	- 100 µg (in 200 µl): 0.5 mg/ml- 200 µg (in 400 µl): 0.5 mg/ml
Storage	Store at 4°C for up to two weeks. For long term storage, aliquot and store at -20°C, avoid freeze/thaw cycles.
Note	For research use only
Isotype	IgG
Clonality	Polyclonal
Purity	Polyclonal antibodies are purified by peptide affinity chromatography
MW	53 kDa
Uniprot ID	P16581
NCBI	006761 , 006770
Entrez	8685
Dilution Range	WB: 1-200-2000, IHC-P: 1:100-500
Expiration Date	12 months from date of receipt.



IHC-P image of mouse bone marrow tissue ...



IHC-P image of rat spleen tissue using C...



IHC-P staining of mouse bone marrow tiss...