
Product Datasheet

Guanylate Cyclase beta1 subunit antibody (orb55865)

Description

Guanylate Cyclase beta1 subunit antibody


Species/Host

Rabbit

Reactivity

Human, Mouse, Rat

Conjugation

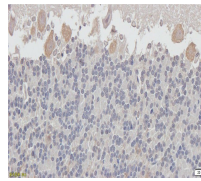
Unconjugated

Tested Applications

ICC, IF, IHC-P, WB

Immunogen

KLH conjugated synthetic peptide derived from human Guanylate Cyclase beta1 subunit. Please contact us for the exact immunogen sequence. The peptide is available as orb393998.



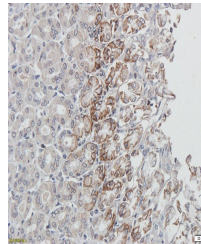
IHC-P staining of rat cerebellum tissue ...

Target

Guanylate Cyclase beta1 subunit

Form/Appearance

10 mM PBS, 0.02% sodium azide



Immunohistochemical staining of paraffin...

Concentration

- 100 µg (in 200 µl): 0.5 mg/ml- 200 µg (in 400 µl): 0.5 mg/ml

Storage

Store at 4°C for up to two weeks. For long term storage, aliquot and store at -20°C, avoid freeze/thaw cycles.

Note

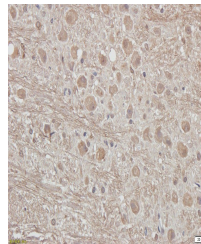
For research use only

Isotype

IgG

Clonality

Polyclonal



IHC-P image of rat cerebellum tissue usi...

Purity

Polyclonal antibodies are purified by peptide affinity chromatography

MW

53 kDa

Uniprot ID
[Q02153](#)
NCBI
[006761](#), [006770](#)
Entrez
[8685](#)
Dilution Range

WB: 1-200-2000, IHC-P: 1:100-500, IF/ICC: 1/100-500

Expiration Date

12 months from date of receipt.