

Product Datasheet

SYP antibody (orb55859)

Description

SYP antibody

Species/Host

Rabbit

Reactivity

Human, Mouse, Rat

Conjugation

Unconjugated

Tested Applications

IHC-P, WB

Immunogen

KLH conjugated synthetic peptide derived from human SYP. Please contact us for the exact immunogen sequence. The peptide is available as orb393992.

Target

SYP

Form/Appearance

10 mM PBS, 0.02% sodium azide

Concentration

- 100 µg (in 200 µl): 0.5 mg/ml- 200 µg (in 400 µl): 0.5 mg/ml

Storage

Store at 4°C for up to two weeks. For long term storage, aliquot and store at -20°C, avoid freeze/thaw cycles.

Note

For research use only

Isotype

IgG

Clonality

Polyclonal

Purity

Polyclonal antibodies are purified by peptide affinity chromatography

MW

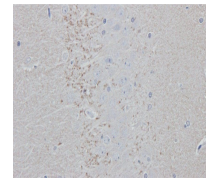
53 kDa

Uniprot ID
[P08247](#)
NCBI
[006761](#), [006770](#)
Entrez
[8685](#)
Dilution Range

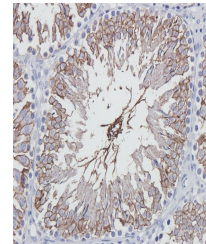
WB: 1-200-2000, IHC-P: 1:100-500

Expiration Date

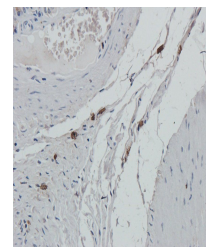
12 months from date of receipt.



Immunohistochemical staining of paraffin...



Immunohistochemical staining of rat test...



Immunohistochemical staining of paraffin...