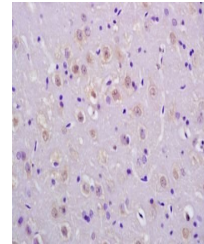


Product Datasheet

P53 (phospho-Ser20) antibody (orb5571)

Description	P53 (phospho-Ser20) antibody
Species/Host	Rabbit
Reactivity	Human, Rat
Conjugation	Unconjugated
Tested Applications	FC, IF, WB
Immunogen	KLH conjugated Synthesised phosphopeptide derived from human P53 around the phosphorylation site of Ser20 (TF(p-S)DL)
Target	phospho-P53 (Ser20)
Preservatives	0.01M TBS(pH7.4) with 1% rAlbumin, 0.03% Proclin300 and 50% Glycerol.
Form/Appearance	Liquid
Concentration	1mg/ml
Storage	Shipped at 4°C. Store at -20 °C for one year. Avoid repeated freeze/thaw cycles.
Note	For research use only
Isotype	IgG
Clonality	Polyclonal
MW	43 kDa
Uniprot ID	P04637
Dilution Range	WB=1:500-2000, IF=1:100-500, Flow-Cyt=3µg /test, ELISA=1:5000-10000
Expiration Date	12 months from date of receipt.



Immunohistochemical analysis of formalin...