

Product Datasheet

Edc3 antibody (orb556968)

Description

Rabbit polyclonal antibody to Edc3


Species/Host

Rabbit

Reactivity

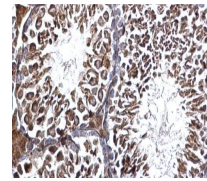
Human, Mouse

Conjugation

Unconjugated

Tested Applications

IHC-P, WB



Immunohistochemical staining of mouse te...

Immunogen

Recombinant protein encompassing a sequence within the center region of human Edc3. The exact sequence is proprietary.

Target

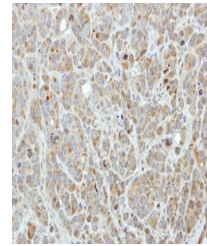
Edc3

Preservatives

0.01% Thimerosal. 0.1M Tris-Glycine (pH7), 20% Glycerol

Form/Appearance

Liquid: 0.1M Tris, 0.1M Glycine, 20% Glycerol (pH7). 0.01% Thimerosal was added as a preservative.



Immunohistochemical staining of MCF7 xen...

Concentration

1 mg/ml

Storage

Store as concentrated solution. Centrifuge briefly prior to opening vial. For short-term storage (1-2 weeks), store at 4°C. For long-term storage, aliquot and store at -20°C or below. Avoid multiple freeze-thaw cycles.

Note

For research use only

Application notes

Positive control: NIH-3T3 , C2C12 , A431

Isotype

IgG

Clonality

Polyclonal

Purity

Purified by antigen-affinity chromatography.

MW

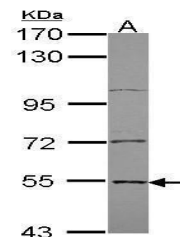
56

Uniprot ID
[Q96F86](https://www.uniprot.org/uniprot/Q96F86)
Dilution Range

WB: 1:500-1:3000 , IHC-P: 1:100-1:1000

Expiration Date

12 months from date of receipt.



Western blot analysis of A431 cells usin...