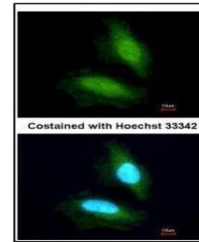


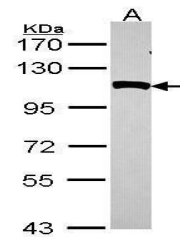
Product Datasheet

NPEPPS antibody (orb556953)

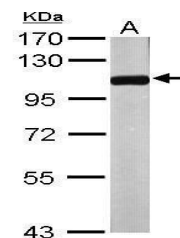
Description	Rabbit polyclonal antibody to NPEPPS
Species/Host	Rabbit
Reactivity	Human, Mouse, Rat
Conjugation	Unconjugated
Tested Applications	ICC, WB
Immunogen	Recombinant protein encompassing a sequence within the center region of human NPEPPS. The exact sequence is proprietary.
Target	NPEPPS
Preservatives	0.025% ProClin 300. 1XPBS (pH7), 20% Glycerol
Form/Appearance	Liquid: 0.1M Tris, 0.1M Glycine, 20% Glycerol (pH7). 0.01% Thimerosal was added as a preservative.
Concentration	0.38 mg/ml
Storage	Store as concentrated solution. Centrifuge briefly prior to opening vial. For short-term storage (1-2 weeks), store at 4°C. For long-term storage, aliquot and store at -20°C or below. Avoid multiple freeze-thaw cycles.
Note	For research use only
Isotype	IgG
Clonality	Polyclonal
Purity	Purified by antigen-affinity chromatography.
MW	103
Uniprot ID	P55786
Dilution Range	WB: 1:500-1:3000 , IF: 1:100-1:1000
Expiration Date	12 months from date of receipt.



Immunofluorescence analysis of HeLa cell...



Western blot analysis of HeLa cells usin...



Western blot analysis of mouse brain usi...