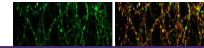

Product Datasheet

Liprin alpha 1 antibody (orb556945)

Description

Rabbit polyclonal antibody to Liprin alpha 1


Species/Host

Rabbit

Reactivity

Human, Mouse, Rat

Conjugation

Unconjugated

Tested

ICC, IHC, IHC-Fr, IP, WB

Applications
Immunogen

Recombinant protein encompassing a sequence within the N-terminus region of human Liprin alpha 1. The exact sequence is proprietary.

Target

Liprin alpha 1

Preservatives

0.025% ProClin 300, 1XPBS pH 7, 20% Glycerol

Form/Appearance

Liquid: 0.1M Tris, 0.1M Glycine, 20% Glycerol (pH7). 0.01% Thimerosal was added as a preservative.

Concentration

0.98 mg/ml

Storage

Store as concentrated solution. Centrifuge briefly prior to opening vial. For short-term storage (1-2 weeks), store at 4°C. For long-term storage, aliquot and store at -20°C or below. Avoid multiple freeze-thaw cycles.

Note

For research use only

Application notes

Positive control: Neuro2A, Jurkat, 293T, A431, HeLa, HepG2

Isotype

IgG

Clonality

Polyclonal

Purity

Purified by antigen-affinity chromatography.

MW

136

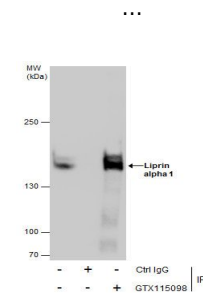
Uniprot ID
[Q13136](https://www.uniprot.org/entry/Q13136)
Dilution Range

WB: 1:500-1:20000, IF: 1:100-1:1000, IP: 1:100-1:500

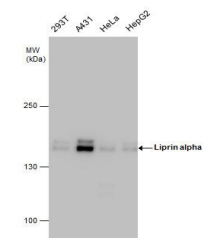
Expiration Date

12 months from date of receipt.

Immunofluorescence analysis of cortical



Immunoprecipitation analysis of A431 who...



Western blot analysis of Various whole c...