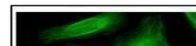

Product Datasheet

alpha Tubulin antibody (orb556941)

Description

Rabbit polyclonal antibody to alpha Tubulin


Species/Host

Rabbit

Reactivity

Human, Mouse

Conjugation

Unconjugated

Tested

ICC, IHC-P, WB

Applications


Immunofluorescence analysis of HeLa cell...

Immunogen

Recombinant protein encompassing a sequence within the center region of human alpha Tubulin 1A. The exact sequence is proprietary.

Target

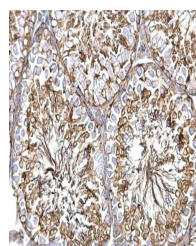
alpha Tubulin

Preservatives

0.01% Thimerosal. 0.1M Tris-Glycine (pH7), 20% Glycerol

Form/Appearance

Liquid: 0.1M Tris, 0.1M Glycine, 20% Glycerol (pH7). 0.01% Thimerosal was added as a preservative.



Immunohistochemical staining of mouse te...

Concentration

0.24 mg/ml

Storage

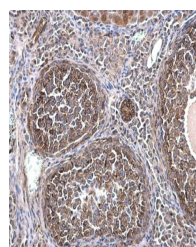
Store as concentrated solution. Centrifuge briefly prior to opening vial. For short-term storage (1-2 weeks), store at 4°C. For long-term storage, aliquot and store at -20°C or below. Avoid multiple freeze-thaw cycles.

Note

For research use only

Application notes

Positive control: 293T , A431 , Jurkat , Raji , NIH-3T3



Immunohistochemical staining of mouse ov...

Isotype

IgG

Clonality

Polyclonal

Purity

Purified by antigen-affinity chromatography.

MW

50

Uniprot ID
[Q71U36](https://www.uniprot.org/uniprot/Q71U36)
Dilution Range

WB: 1:500-1:3000 , IF: 1:100-1:1000 , IHC-P: 1:100-1:1000

Expiration Date

12 months from date of receipt.