
Product Datasheet

**regulator of G protein signaling 10 Antibody
(orb556937)**

Description

Rabbit polyclonal antibody to RGS10


Species/Host

Rabbit

Reactivity

Human

Conjugation

Unconjugated

Tested

IHC-P, WB

Applications

Immunohistochemical staining of human br...

Immunogen

Recombinant protein encompassing a sequence within the center region of human RGS10. The exact sequence is proprietary.

Target

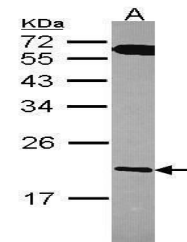
RGS10

Preservatives

0.01% Thimerosal. 0.1M Tris-Glycine (pH7), 20% Glycerol

Form/Appearance

Liquid: 0.1M Tris, 0.1M Glycine, 20% Glycerol (pH7). 0.01% Thimerosal was added as a preservative.



Western blot analysis of A431 cells usin...

Concentration

0.7 mg/ml

Storage

Store as concentrated solution. Centrifuge briefly prior to opening vial. For short-term storage (1-2 weeks), store at 4°C. For long-term storage, aliquot and store at -20°C or below. Avoid multiple freeze-thaw cycles.

Note

For research use only

Application notes

Positive control: A431

Isotype

IgG

Clonality

Polyclonal

Purity

Purified by antigen-affinity chromatography.

MW

20

Uniprot ID
[O43665](https://www.uniprot.org/entry/O43665)
Dilution Range

WB: 1:500-1:3000 , IHC-P: 1:100-1:1000

Expiration Date

12 months from date of receipt.