
Product Datasheet

Syntrophin alpha 1 antibody (orb556928)

Description

Rabbit polyclonal antibody to Syntrophin alpha 1


Species/Host

Rabbit

Reactivity

Human

Conjugation

Unconjugated

Tested

ICC, WB

Applications
Immunogen

Recombinant protein encompassing a sequence within the center region of human Syntrophin alpha 1. The exact sequence is proprietary.

Target

Syntrophin alpha 1

Preservatives

0.01% Thimerosal. 0.1M Tris-Glycine (pH7), 20% Glycerol

Form/Appearance

Liquid: 0.1M Tris, 0.1M Glycine, 20% Glycerol (pH7). 0.01% Thimerosal was added as a preservative.

Concentration

0.78 mg/ml

Storage

Store as concentrated solution. Centrifuge briefly prior to opening vial. For short-term storage (1-2 weeks), store at 4°C. For long-term storage, aliquot and store at -20°C or below. Avoid multiple freeze-thaw cycles.

Note

For research use only

Application notes

Positive control: A549

Isotype

IgG

Clonality

Polyclonal

Purity

Purified by antigen-affinity chromatography.

MW

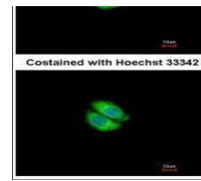
54

Uniprot ID
[Q13424](https://www.uniprot.org/uniprot/Q13424)
Dilution Range

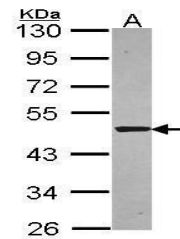
WB: 1:1000-1:10000 , IF: 1:100-1:1000

Expiration Date

12 months from date of receipt.



Immunofluorescence analysis of A549 cell...



Western blot analysis of A549 cells usin...