
Product Datasheet

Sodium/Potassium ATPase beta 3 antibody (orb556910)

Description

Rabbit polyclonal antibody to


Species/Host

Rabbit

Reactivity

Human

Conjugation

Unconjugated

Tested Applications

IHC, IHC-P, WB

Immunogen

Recombinant protein encompassing a sequence within the center region of human Sodium/Potassium ATPase beta 3. The exact sequence is proprietary.

Target

Sodium/Potassium ATPase beta 3

Preservatives

0.01% Thimerosal. 0.1M Tris-Glycine (pH7), 20% Glycerol

Form/Appearance

Liquid: 0.1M Tris, 0.1M Glycine, 20% Glycerol (pH7). 0.01% Thimerosal was added as a preservative.

Concentration

0.26 mg/ml

Storage

Store as concentrated solution. Centrifuge briefly prior to opening vial. For short-term storage (1-2 weeks), store at 4°C. For long-term storage, aliquot and store at -20°C or below. Avoid multiple freeze-thaw cycles.

Note

For research use only

Application notes

Positive control: HeLa

Isotype

IgG

Clonality

Polyclonal

Purity

Purified by antigen-affinity chromatography.

MW

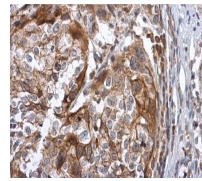
32

Uniprot ID
[P54709](https://www.uniprot.org/entry/P54709)
Dilution Range

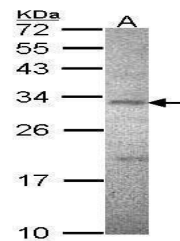
WB: 1:500-1:3000 , IHC-P: 1:100-1:1000

Expiration Date

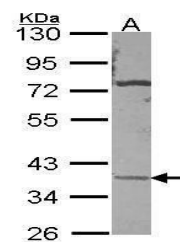
12 months from date of receipt.



Immunohistochemical staining of human ce...



Western blot analysis of HeLa cells usin...



Western blot analysis of A431 cells usin...