
Product Datasheet

RAS like proto-oncogene A Antibody (orb556906)

Description

Rabbit polyclonal antibody to RALA

Species/Host

Rabbit

Reactivity

Frog, Human, Mouse, Rat, Rodent

Conjugation

Unconjugated

Tested Applications

WB

Immunogen

Recombinant protein encompassing a sequence within the center region of human RALA. The exact sequence is proprietary.

Target

RALA

Preservatives

0.01% Thimerosal. 0.1M Tris-Glycine (pH7), 20% Glycerol

Form/Appearance

Liquid: 0.1M Tris, 0.1M Glycine, 20% Glycerol (pH7). 0.01% Thimerosal was added as a preservative.

Concentration

0.55 mg/ml

Storage

Store as concentrated solution. Centrifuge briefly prior to opening vial. For short-term storage (1-2 weeks), store at 4°C. For long-term storage, aliquot and store at -20°C or below. Avoid multiple freeze-thaw cycles.

Note

For research use only

Application notes

Positive control: Mouse brain , rat lung , HepG2

Isotype

IgG

Clonality

Polyclonal

Purity

Purified by antigen-affinity chromatography.

MW

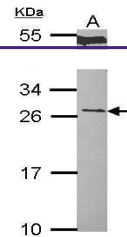
24

Uniprot ID
[P11233](https://www.uniprot.org/uniprot/P11233)
Dilution Range

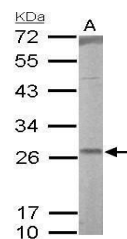
WB: 1:500-1:3000

Expiration Date

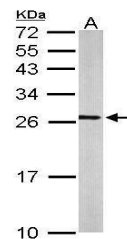
12 months from date of receipt.



Western blot analysis of Hep G2 cells us...



Western blot analysis of rat lung lysate...



Western blot analysis of mouse brain usi...