

## Product Datasheet

**regulator of G protein signaling 4 Antibody  
(orb556904)**

**Description**

Rabbit polyclonal antibody to RGS4


**Species/Host**

Rabbit

**Reactivity**

Human, Rat

**Conjugation**

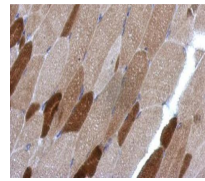
Unconjugated

**Tested Applications**

IHC-P, WB

**Immunogen**

Recombinant protein encompassing a sequence within the center region of human RGS4. The exact sequence is proprietary.



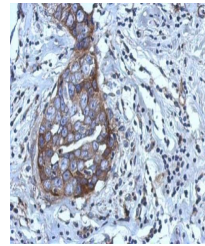
Immunohistochemical staining of mouse mu...

**Target**

RGS4

**Preservatives**

0.025% ProClin 300, 1XPBS (pH7), 20% Glycerol



Immunohistochemical staining of human br...

**Form/Appearance**

Liquid: 0.1M Tris, 0.1M Glycine, 20% Glycerol (pH7). 0.01% Thimerosal was added as a preservative.

**Concentration**

0.43 mg/ml

**Storage**

Store as concentrated solution. Centrifuge briefly prior to opening vial. For short-term storage (1-2 weeks), store at 4°C. For long-term storage, aliquot and store at -20°C or below. Avoid multiple freeze-thaw cycles.

**Note**

For research use only

**Application notes**

Positive control: rat brain

**Isotype**

IgG

**Clonality**

Polyclonal

**Purity**

Purified by antigen-affinity chromatography.

**MW**

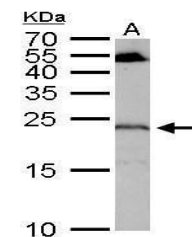
23

**Uniprot ID**
[P49798](https://www.uniprot.org/protein/P49798)
**Dilution Range**

WB: 1:500-1:3000, IHC-P: 1:100-1:1000

**Expiration Date**

12 months from date of receipt.



Western blot analysis of mouse cerebellu...