

## Product Datasheet

### glucosylceramidase beta Antibody (orb556899)

**Description**

Rabbit polyclonal antibody to GBA


**Species/Host**

Rabbit

**Reactivity**

Human, Rat

**Conjugation**

Unconjugated

**Tested**

IHC-P, WB

**Applications**
**Immunogen**

Recombinant protein encompassing a sequence within the center region of human GBA. The exact sequence is proprietary.

**Target**

GBA

**Preservatives**

0.025% ProClin 300, 1XPBS (pH7), 20% Glycerol

**Form/Appearance**

Liquid: 0.1M Tris, 0.1M Glycine, 20% Glycerol (pH7). 0.01% Thimerosal was added as a preservative.

**Concentration**

0.35 mg/ml

**Storage**

Store as concentrated solution. Centrifuge briefly prior to opening vial. For short-term storage (1-2 weeks), store at 4°C. For long-term storage, aliquot and store at -20°C or below. Avoid multiple freeze-thaw cycles.

**Note**

For research use only

**Isotype**

IgG

**Clonality**

Polyclonal

**Purity**

Purified by antigen-affinity chromatography.

**MW**

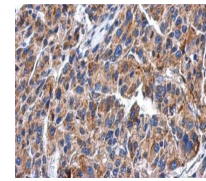
60

**Uniprot ID**
[P04062](https://www.uniprot.org/protein/P04062)
**Dilution Range**

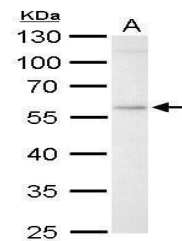
WB: 1:500-1:3000, IHC-P: 1:100-1:1000

**Expiration Date**

12 months from date of receipt.



Immunohistochemical staining of human he...



Western blot analysis of HepG2 cells usi...