

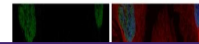
---

## Product Datasheet

### NuMA antibody (orb556861)

**Description**

Rabbit polyclonal antibody to NuMA


**Species/Host**

Rabbit

**Reactivity**

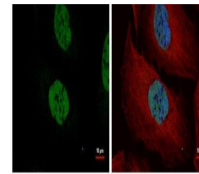
Human

**Conjugation**

Unconjugated

**Tested Applications**

ICC, IHC-P, WB



Immunofluorescence analysis of U2OS cell...

**Immunogen**

Recombinant protein encompassing a sequence within the N-terminus region of human NuMA. The exact sequence is proprietary.

**Target**

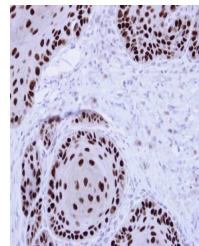
NuMA

**Preservatives**

0.025% ProClin 300, 1XPBS (pH7), 20% Glycerol

**Form/Appearance**

Liquid: 1XPBS, 20% Glycerol (pH7). 0.025% ProClin 300 was added as a preservative.



Immunohistochemical staining of Cal27 Xe...

**Concentration**

0.54 mg/ml

**Storage**

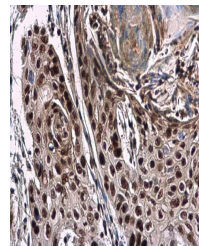
Store as concentrated solution. Centrifuge briefly prior to opening vial. For short-term storage (1-2 weeks), store at 4°C. For long-term storage, aliquot and store at -20°C or below. Avoid multiple freeze-thaw cycles.

**Note**

For research use only

**Application notes**

Positive control: HeLa (100 ng/ml Nocodazole treatment for 24 hr)



Immunohistochemical staining of human es...

**Isotype**

IgG

**Clonality**

Polyclonal

**Purity**

Purified by antigen-affinity chromatography.

**MW**

238

**Uniprot ID**
[Q14980](https://www.uniprot.org/entry/Q14980)
**Dilution Range**

WB: 1:500-1:10000, IF: 1:100-1:1000, IHC-P: 1:100-1:1000

**Expiration Date**

12 months from date of receipt.