
Product Datasheet

HPRT1 antibody (orb556857)

Description

Rabbit polyclonal antibody to HPRT1


Species/Host

Rabbit

Reactivity

Human, Mouse, Rat

Conjugation

Unconjugated

Tested

ICC, IHC-P, WB

Applications

Immunofluorescence analysis of HeLa cell...

Immunogen

Recombinant protein encompassing a sequence within the center region of human HPRT. The exact sequence is proprietary.

Target

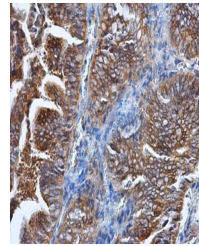
HPRT1

Preservatives

0.025% ProClin 300. 1XPBS pH 7, 20% Glycerol

Form/Appearance

Liquid: 1XPBS, 20% Glycerol (pH7). 0.025% ProClin 300 was added as a preservative.



Immunohistochemical staining of human en...

Concentration

0.65 mg/ml

Storage

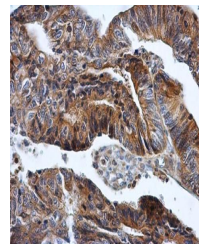
Store as concentrated solution. Centrifuge briefly prior to opening vial. For short-term storage (1-2 weeks), store at 4°C. For long-term storage, aliquot and store at -20°C or below. Avoid multiple freeze-thaw cycles.

Note

For research use only

Application notes

Positive control: mouse liver , 293T , A431 , HeLa , HepG2



Immunohistochemical staining of human co...

Isotype

IgG

Clonality

Polyclonal

Purity

Purified by antigen-affinity chromatography.

MW

25

Uniprot ID
[P00492](#)
Dilution Range

WB: 1:500-1:3000 , IF: 1:100-1:1000 , IHC-P: 1:100-1:1000

Expiration Date

12 months from date of receipt.