
Product Datasheet

HLA-DR beta antibody (orb556855)

Description Rabbit polyclonal antibody to HLA-DR beta



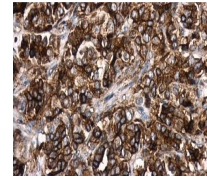
Species/Host Rabbit

Reactivity Human

Conjugation Unconjugated

Tested Applications IHC-P, WB

Immunogen Recombinant protein encompassing a sequence within the center region of human HLA-DR. The exact sequence is proprietary.

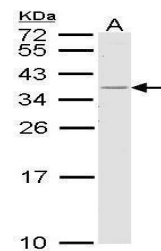


Immunohistochemical staining of human ce...

Target HLA-DR beta

Preservatives 0.01% Thimerosal. 0.1M Tris-Glycine (pH7), 10% Glycerol

Form/Appearance Liquid: 0.1M Tris, 0.1M Glycine, 10% Glycerol (pH7). 0.01% Thimerosal was added as a preservative.



Western blot analysis of H1299 cells usi...

Concentration 0.43 mg/ml

Storage Store as concentrated solution. Centrifuge briefly prior to opening vial. For short-term storage (1-2 weeks), store at 4°C. For long-term storage, aliquot and store at -20°C or below. Avoid multiple freeze-thaw cycles.

Note For research use only

Application notes Positive control: H1299

Isotype IgG

Clonality Polyclonal

Purity Purified by antigen-affinity chromatography.

Uniprot ID [P01912](#), [P79483](#), [P13762](#), [P01903](#), [Q30154](#), [Q29974](#), [P01911](#)

Dilution Range WB: 1:500-1:3000 , IHC-P: 1:100-1:1000

Expiration Date 12 months from date of receipt.