

---

## Product Datasheet

### ROCK1 antibody (orb556838)

**Description**

Rabbit polyclonal antibody to ROCK1

**Species/Host**

Rabbit

**Reactivity**

Human, Mouse, Rat

**Conjugation**

Unconjugated

**Tested Applications**

ICC, IHC-P, IP, WB

**Immunogen**

Recombinant protein encompassing a sequence within the N-terminus region of human ROCK1. The exact sequence is proprietary.

**Target**

ROCK1

**Preservatives**

0.025% ProClin 300, 1XPBS pH 7, 1% rAlbumin, 20% Glycerol

**Form/Appearance**

Liquid: 1XPBS, 20% Glycerol (pH7). 0.025% ProClin 300 was added as a preservative.

**Concentration**

0.78 mg/ml

**Storage**

Store as concentrated solution. Centrifuge briefly prior to opening vial. For short-term storage (1-2 weeks), store at 4°C. For long-term storage, aliquot and store at -20°C or below. Avoid multiple freeze-thaw cycles.

**Note**

For research use only

**Application notes**

Positive control: rat brain , NIH-3T3 , C2Cl2 , HeLa

**Isotype**

IgG

**Clonality**

Polyclonal

**Purity**

Purified by antigen-affinity chromatography.

**MW**

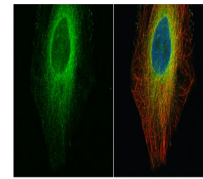
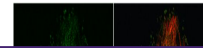
158

**Uniprot ID**
[Q13464](https://www.uniprot.org/uniprot/Q13464)
**Dilution Range**

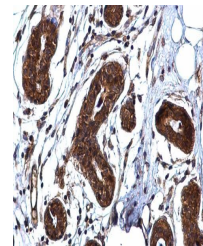
WB: 1:500-1:3000 , IF: 1:100-1:1000 , IHC-P: 1:100-1:1000 , IP: 1:100-1:500

**Expiration Date**

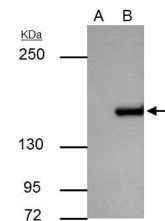
12 months from date of receipt.



Immunofluorescence analysis of HeLa cell...



Immunohistochemical staining of human br...



Immunoprecipitation analysis of 293T who...