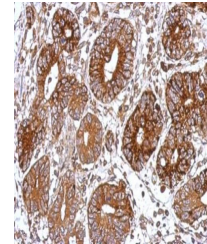


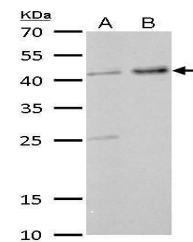
## Product Datasheet

### GNAS antibody (orb556837)

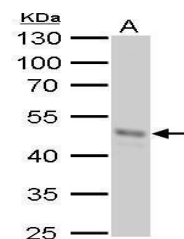
<b>Description</b>	Rabbit polyclonal antibody to GNAS
<b>Species/Host</b>	Rabbit
<b>Reactivity</b>	Human, Mouse, Rat
<b>Conjugation</b>	Unconjugated
<b>Tested Applications</b>	IHC-P, WB
<b>Immunogen</b>	Recombinant protein encompassing a sequence within the center region of human GNAS. The exact sequence is proprietary.
<b>Target</b>	GNAS
<b>Preservatives</b>	0.025% ProClin 300. 1XPBS pH 7, 20% Glycerol
<b>Form/Appearance</b>	Liquid: 0.1M Tris, 0.1M Glycine, 10% Glycerol (pH7). 0.01% Thimerosal was added as a preservative.
<b>Concentration</b>	1 mg/ml
<b>Storage</b>	Store as concentrated solution. Centrifuge briefly prior to opening vial. For short-term storage (1-2 weeks), store at 4°C. For long-term storage, aliquot and store at -20°C or below. Avoid multiple freeze-thaw cycles.
<b>Note</b>	For research use only
<b>Isotype</b>	IgG
<b>Clonality</b>	Polyclonal
<b>Purity</b>	Purified by antigen-affinity chromatography.
<b>Uniprot ID</b>	<a href="#">Q5JWF2</a> , <a href="#">P84996</a> , <a href="#">O95467</a> , <a href="#">P63092</a>
<b>Dilution Range</b>	WB: 1:500-1:3000 , IHC-P: 1:100-1:1000
<b>Expiration Date</b>	12 months from date of receipt.



Immunohistochemical staining of human CO...



Western blot analysis of HepG2(Lane 1), ...



Western blot analysis of HepG2(Lane 1), ...