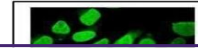

Product Datasheet

VCP antibody (orb556833)

Description

Rabbit polyclonal antibody to VCP


Species/Host

Rabbit

Reactivity

Canine, Human, Mouse, Rat, Zebrafish

Conjugation

Unconjugated

Tested

ICC, IHC, IHC-P, IP, WB

Applications
Immunogen

Recombinant protein encompassing a sequence within the N-terminus region of human VCP. The exact sequence is proprietary.

Target

VCP

Preservatives

0.025% ProClin 300, 1XPBS (pH7), 1% rAlbumin, 20% Glycerol

Form/Appearance

Liquid: 1XPBS, 1% rAlbumin, 20% Glycerol (pH7). 0.025% ProClin 300 was added as a preservative.

Concentration

0.3 mg/ml

Storage

Store as concentrated solution. Centrifuge briefly prior to opening vial. For short-term storage (1-2 weeks), store at 4°C. For long-term storage, aliquot and store at -20°C or below. Avoid multiple freeze-thaw cycles.

Note

For research use only

Application notes

Positive control: Mouse brain , rat brain , A549 , H1299 , HCT116

Isotype

IgG

Clonality

Polyclonal

Purity

Purified by antigen-affinity chromatography.

MW

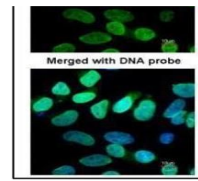
89

Uniprot ID
[P55072](https://www.uniprot.org/uniprot/P55072)
Dilution Range

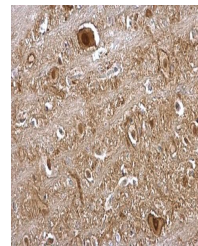
WB: 1:1000-1:10000 , IF: 1:100-1:1000 , IHC-P: 1:100-1:1000

Expiration Date

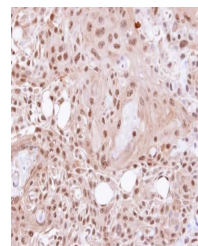
12 months from date of receipt.



Immunofluorescence analysis of HeLa cell...



Immunohistochemical staining of Rat brai...



Immunohistochemical staining of Ca922 xe...