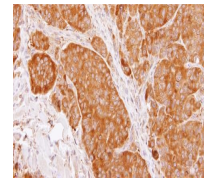


---

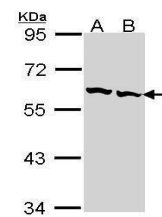
## Product Datasheet

### TCP1 beta antibody (orb556799)

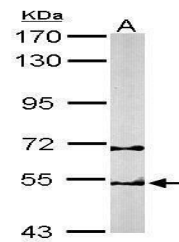
|                            |  |
|----------------------------|--|
| <b>Description</b>         | Rabbit polyclonal antibody to TCP1 beta  |
| <b>Species/Host</b>        | Rabbit   |
| <b>Reactivity</b>          | Human, Mouse   |
| <b>Conjugation</b>         | Unconjugated   |
| <b>Tested Applications</b> | IHC-P, WB  |
| <b>Immunogen</b>           | Recombinant protein encompassing a sequence within the center region of human TCP1 beta. The exact sequence is proprietary.  |
| <b>Target</b>              | TCP1 beta  |
| <b>Preservatives</b>       | 0.01% Thimerosal. 0.1M Tris-Glycine (pH7), 10% Glycerol  |
| <b>Form/Appearance</b>     | Liquid: 0.1M Tris, 0.1M Glycine, 10% Glycerol (pH7). 0.01% Thimerosal was added as a preservative.   |
| <b>Concentration</b>       | 1 mg/ml  |
| <b>Storage</b>             | Store as concentrated solution. Centrifuge briefly prior to opening vial. For short-term storage (1-2 weeks), store at 4°C. For long-term storage, aliquot and store at -20°C or below. Avoid multiple freeze-thaw cycles. |
| <b>Note</b>                | For research use only  |
| <b>Application notes</b>   | Positive control: Mouse brain  |
| <b>Isotype</b>             | IgG  |
| <b>Clonality</b>           | Polyclonal   |
| <b>Purity</b>              | Purified by antigen-affinity chromatography.   |
| <b>MW</b>                  | 57   |
| <b>Uniprot ID</b>          | <a href="#">P78371</a>   |
| <b>Dilution Range</b>      | WB: 1:500-1:3000 , IHC-P: 1:100-1:1000   |
| <b>Expiration Date</b>     | 12 months from date of receipt.  |



Immunohistochemical staining of SW480  
Xe...



Western blot analysis of Hep G2(Lane 1),...



Western blot analysis of Hep G2(Lane 1),...