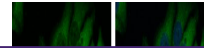

Product Datasheet

SAH3 antibody (orb556793)

Description

Rabbit polyclonal antibody to SAH3


Species/Host

Rabbit

Reactivity

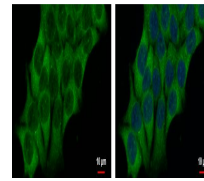
Human

Conjugation

Unconjugated

Tested

ICC, IHC-P, WB

Applications


Immunofluorescence analysis of HCT 116

C...

Immunogen

Recombinant protein encompassing a sequence within the center region of human SAH3. The exact sequence is proprietary.

Target

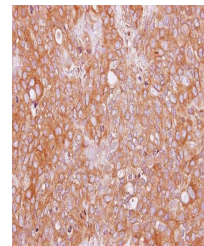
SAH3

Preservatives

0.01% Thimerosal. 0.1M Tris-Glycine (pH7), 10% Glycerol

Form/Appearance

Liquid: 0.1M Tris, 0.1M Glycine, 10% Glycerol (pH7). 0.01% Thimerosal was added as a preservative.



Immunohistochemical staining of BT474

xe...

Concentration

0.66 mg/ml

Storage

Store as concentrated solution. Centrifuge briefly prior to opening vial. For short-term storage (1-2 weeks), store at 4°C. For long-term storage, aliquot and store at -20°C or below. Avoid multiple freeze-thaw cycles.

Note

For research use only

Application notes

Positive control: Raji

Isotype

IgG

Clonality

Polyclonal

Purity

Purified by antigen-affinity chromatography.

MW

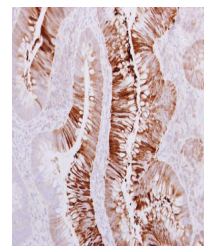
67

Uniprot ID
[Q96HN2](#)
Dilution Range

WB: 1:500-1:3000 , IF: 1:100-1:1000 , IHC-P: 1:100-1:1000

Expiration Date

12 months from date of receipt.



Immunohistochemical staining of human

re...