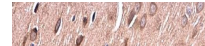

Product Datasheet

protein kinase C alpha Antibody (orb556739)

Description

Rabbit polyclonal antibody to PKC alpha


Species/Host

Rabbit

Reactivity

Human, Mouse, Rat

Conjugation

Unconjugated

Tested

IHC-P, WB

Applications

Immunohistochemical staining of Rat brai...

Immunogen

Recombinant protein encompassing a sequence within the N-terminus region of human PKC alpha. The exact sequence is proprietary.

Target

PKC alpha

Preservatives

0.01% Thimerosal. 0.1M Tris-Glycine (pH7), 10% Glycerol

Form/Appearance

Liquid: 0.1M Tris, 0.1M Glycine, 10% Glycerol (pH7). 0.01% Thimerosal was added as a preservative.

Concentration

0.69 mg/ml

Storage

Store as concentrated solution. Centrifuge briefly prior to opening vial. For short-term storage (1-2 weeks), store at 4°C. For long-term storage, aliquot and store at -20°C or below. Avoid multiple freeze-thaw cycles.

Note

For research use only

Application notes

Positive control: H1299, Jurkat, U87-MG, SK-N-SH, IMR32, SK-N-AS, Neuro 2A, C8D30, NIH-3T3, Raw264.7, C2C12, PC-12, Rat2

Isotype

IgG

Clonality

Polyclonal

Purity

Purified by antigen-affinity chromatography.

MW

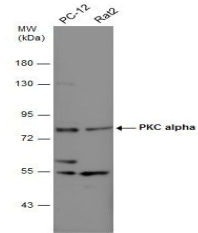
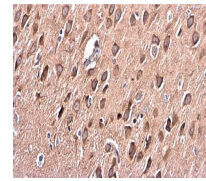
77

Uniprot ID
[P17252](https://www.uniprot.org/protein/P17252)
Dilution Range

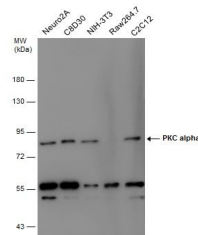
WB: 1:500-1:3000, IHC-P: 1:100-1:1000

Expiration Date

12 months from date of receipt.



Western blot analysis of Various whole c...



Western blot analysis of Various whole c...