
Product Datasheet

fission, mitochondrial 1 Antibody (orb556723)

Description

Rabbit polyclonal antibody to FIS1


Species/Host

Rabbit

Reactivity

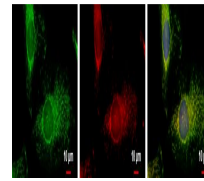
Human, Mouse, Rat

Conjugation

Unconjugated

Tested Applications

ICC, IHC-P, WB



Immunofluorescence analysis of HeLa cell...

Immunogen

Full length human FIS1 Recombinant protein.

Target

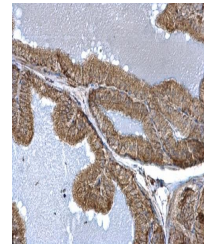
FIS1

Preservatives

0.025% ProClin 300. 1XPBS pH 7, 20% Glycerol

Form/Appearance

Liquid: 1XPBS, 20% Glycerol (pH7). 0.025% ProClin 300 was added as a preservative.



Immunohistochemical staining of mouse pr...

Concentration

1.2 mg/ml

Storage

Store as concentrated solution. Centrifuge briefly prior to opening vial. For short-term storage (1-2 weeks), store at 4°C. For long-term storage, aliquot and store at -20°C or below. Avoid multiple freeze-thaw cycles.

Note

For research use only

Application notes

Positive control: Raji , Mouse brain , mouse liver , 293T , A431 , HeLa , HepG2

Isotype

IgG

Clonality

Polyclonal

Purity

Purified by antigen-affinity chromatography.

MW

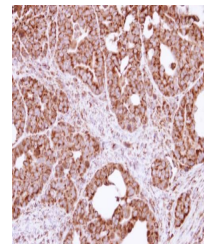
17

Uniprot ID
[Q9Y3D6](https://www.uniprot.org/entry/Q9Y3D6)
Dilution Range

WB: 1:500-1:20000 , IF: 1:100-1:2000 , IHC-P: 1:100-1:1000

Expiration Date

12 months from date of receipt.



Immunohistochemical staining of NCIN87 x...