

---

## Product Datasheet

**NUF2 component of NDC80 kinetochore complex  
Antibody (orb556711)**

**Description**

Rabbit polyclonal antibody to NUF2


**Species/Host**

Rabbit

**Reactivity**

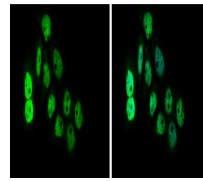
Human

**Conjugation**

Unconjugated

**Tested**

ICC, WB

**Applications**


Immunofluorescence analysis of A431 cell...

**Immunogen**

Recombinant protein corresponding to human CDCA1

**Target**

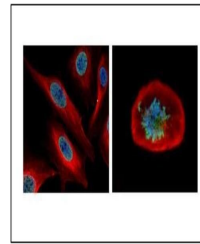
NUF2

**Preservatives**

0.025% ProClin 300, 1XPBS (pH7), 20% Glycerol

**Form/Appearance**

Liquid: 0.1M Tris, 0.1M Glycine, 10% Glycerol (pH7). 0.01% Thimerosal was added as a preservative.



Immunofluorescence analysis of U2OS cell...

**Concentration**

0.35 mg/ml

**Storage**

Store as concentrated solution. Centrifuge briefly prior to opening vial. For short-term storage (1-2 weeks), store at 4°C. For long-term storage, aliquot and store at -20°C or below. Avoid multiple freeze-thaw cycles.

**Note**

For research use only

**Isotype**

IgG

**Clonality**

Polyclonal

**Purity**

Purified by antigen-affinity chromatography.

**MW**

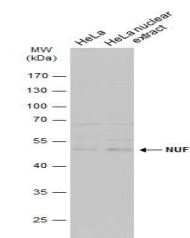
54

**Uniprot ID**
[Q9BZD4](https://www.uniprot.org/entry/Q9BZD4)
**Dilution Range**

WB: 1:500-1:3000 , IF: 1:100-1:1000

**Expiration Date**

12 months from date of receipt.



Western blot analysis of HeLa cells usin...