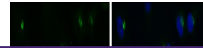

Product Datasheet

**RAB6A, member RAS oncogene family Antibody
(orb556708)**

Description

Rabbit polyclonal antibody to RAB6A


Species/Host

Rabbit

Reactivity

Human, Mouse, Rat

Conjugation

Unconjugated

Tested Applications

ICC, IHC-P, WB

Immunogen

Full length human RAB6A Recombinant protein.

Target

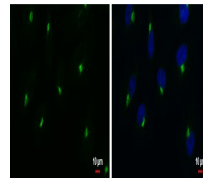
RAB6A

Preservatives

0.025% ProClin 300, 1XPBS pH 7, 1% rAlbumin, 20% Glycerol

Form/Appearance

Liquid: 1XPBS, 20% Glycerol (pH7). 0.025% ProClin 300 was added as a preservative.



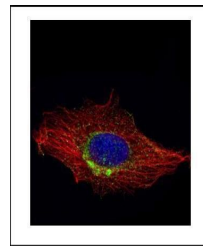
Immunofluorescence analysis of A549 cell...

Concentration

1 mg/ml

Storage

Store as concentrated solution. Centrifuge briefly prior to opening vial. For short-term storage (1-2 weeks), store at 4°C. For long-term storage, aliquot and store at -20°C or below. Avoid multiple freeze-thaw cycles.



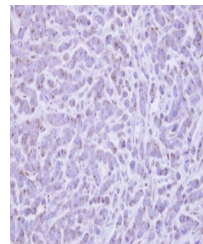
Immunofluorescence analysis of HeLa cell...

Note

For research use only

Application notes

Positive control: mouse brain , rat brain , 293T



Immunohistochemical staining of MDA-MB-4...

Isotype

IgG

Clonality

Polyclonal

Purity

Purified by antigen-affinity chromatography.

MW

24

Uniprot ID
P20340
Dilution Range

WB: 1:500-1:3000 , IF: 1:100-1:1000 , IHC-P: 1:100-1:1000

Expiration Date

12 months from date of receipt.