
Product Datasheet

Cytokeratin 20 antibody (orb556706)

Description

Rabbit polyclonal antibody to Cytokeratin 20


Species/Host

Rabbit

Reactivity

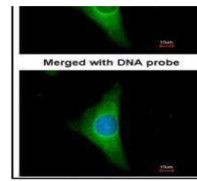
Human, Mouse

Conjugation

Unconjugated

Tested Applications

ICC, IHC-P, WB



Immunofluorescence analysis of HeLa cell...

Immunogen

Recombinant protein encompassing a sequence within the center region of human Cytokeratin 20. The exact sequence is proprietary.

Target

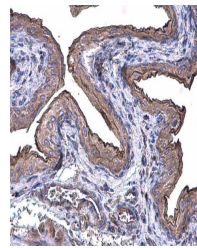
Cytokeratin 20

Preservatives

0.025% ProClin 300, 1XPBS (pH7), 20% Glycerol

Form/Appearance

Liquid: 0.1M Tris, 0.1M Glycine, 10% Glycerol (pH7). 0.01% Thimerosal was added as a preservative.



Immunohistochemical staining of mouse ur...

Concentration

1 mg/ml

Storage

Store as concentrated solution. Centrifuge briefly prior to opening vial. For short-term storage (1-2 weeks), store at 4°C. For long-term storage, aliquot and store at -20°C or below. Avoid multiple freeze-thaw cycles.

Note

For research use only

Application notes

Positive control: HeLa

Isotype

IgG

Clonality

Polyclonal

Purity

Purified by antigen-affinity chromatography.

MW

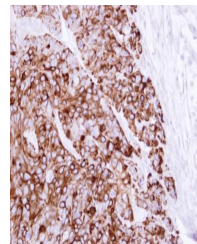
48 kDa

Uniprot ID
P35900
Dilution Range

WB: 1:500-1:3000, IF: 1:100-1:1000, IHC-P: 1:100-1:1000

Expiration Date

12 months from date of receipt.



Immunohistochemical staining of HT29 xen...