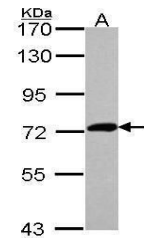


Product Datasheet

XPNPEP2 antibody (orb556659)

| | |
|----------------------------|--|
| Description | Rabbit polyclonal antibody to XPNPEP2 |
| Species/Host | Rabbit |
| Reactivity | Human, Rat |
| Conjugation | Unconjugated |
| Tested Applications | IHC-P, WB |
| Immunogen | Recombinant protein encompassing a sequence within the center region of human XPNPEP2. The exact sequence is proprietary. |
| Target | XPNPEP2 |
| Preservatives | 0.01% Thimerosal. 0.1M Tris-Glycine (pH7), 10% Glycerol |
| Form/Appearance | Liquid: 0.1M Tris, 0.1M Glycine, 10% Glycerol (pH7). 0.01% Thimerosal was added as a preservative. |
| Concentration | 1 mg/ml |
| Storage | Store as concentrated solution. Centrifuge briefly prior to opening vial. For short-term storage (1-2 weeks), store at 4°C. For long-term storage, aliquot and store at -20°C or below. Avoid multiple freeze-thaw cycles. |
| Note | For research use only |
| Isotype | IgG |
| Clonality | Polyclonal |
| Purity | Purified by antigen-affinity chromatography. |
| MW | 76 |
| Uniprot ID | O43895 |
| Dilution Range | WB: 1:500-1:3000 |
| Expiration Date | 12 months from date of receipt. |



Western blot analysis of HepG2 cells using XPNPEP2 antibody.