

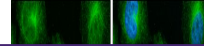
---

## Product Datasheet

### alpha Tubulin antibody (orb556641)

**Description**

Rabbit polyclonal antibody to alpha Tubulin


**Species/Host**

Rabbit

**Reactivity**

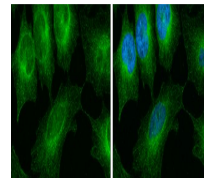
Drosophila, Human, Mouse, Rat

**Conjugation**

Unconjugated

**Tested**

ICC, IHC-P, WB

**Applications**


Immunofluorescence analysis of HeLa cell...

**Immunogen**

Recombinant protein encompassing a sequence within the center region of human alpha Tubulin 1A. The exact sequence is proprietary.

**Target**

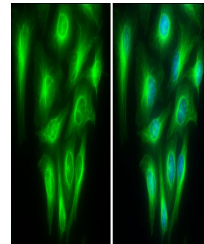
alpha Tubulin

**Preservatives**

0.025% ProClin 300. 1XPBS pH 7, 20% Glycerol

**Form/Appearance**

Liquid: 1XPBS, 1% rAlbumin, 20% Glycerol (pH7). 0.025% ProClin 300 was added as a preservative.



Immunofluorescence analysis of HeLa cell...

**Concentration**

0.25 mg/ml

**Storage**

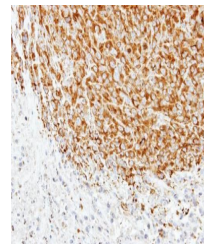
Store as concentrated solution. Centrifuge briefly prior to opening vial. For short-term storage (1-2 weeks), store at 4°C. For long-term storage, aliquot and store at -20°C or below. Avoid multiple freeze-thaw cycles.

**Note**

For research use only

**Application notes**

Positive control: NIH-3T3 , mouse brain , Jurkat , Raji , 293T , A431 , HeLa , HepG2 , H1299 , HCT116 , MCF-7 , NT2D1 , PC-3 , U87-MG , rat brain



Immunohistochemical staining of SAS xeno...

**Isotype**

IgG

**Clonality**

Polyclonal

**Purity**

Purified by antigen-affinity chromatography.

**MW**

50

**Uniprot ID**
[Q71U36](https://www.uniprot.org/entry/Q71U36)
**Dilution Range**

WB: 1:500-1:20000 , IF: 1:100-1:1000 , IHC-P: 1:100-1:1000

**Expiration Date**

12 months from date of receipt.