

Product Datasheet

SMC1A antibody (orb556631)

Description

Rabbit polyclonal antibody to SMC1A

Species/Host

Rabbit

Reactivity

Human, Zebrafish

Conjugation

Unconjugated

Tested Applications

IHC-P, IP, WB

Immunogen

Recombinant protein encompassing a sequence within the N-terminus region of human SMC1A. The exact sequence is proprietary.

Target

SMC1A

Preservatives

0.01% Thimerosal. 0.1M Tris-Glycine (pH7), 10% Glycerol

Form/Appearance

Liquid: 0.1M Tris, 0.1M Glycine, 10% Glycerol (pH7). 0.01% Thimerosal was added as a preservative.

Concentration

1 mg/ml

Storage

Store as concentrated solution. Centrifuge briefly prior to opening vial. For short-term storage (1-2 weeks), store at 4°C. For long-term storage, aliquot and store at -20°C or below. Avoid multiple freeze-thaw cycles.

Note

For research use only

Application notes

Positive control: Molt-4

Isotype

IgG

Clonality

Polyclonal

Purity

Purified by antigen-affinity chromatography.

MW

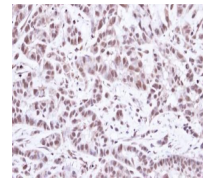
143

Uniprot ID
[Q14683](https://www.uniprot.org/uniprot/Q14683)
Dilution Range

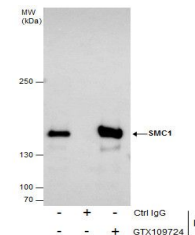
WB: 1:1000-1:10000 , IHC-P: 1:100-1:1000 , IP: 1:100-1:500

Expiration Date

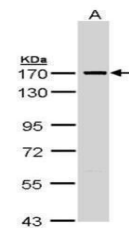
12 months from date of receipt.



Immunohistochemical staining of A549 xen...



Immunoprecipitation analysis of 293T who...



Western blot analysis of Molt-4 cells us...