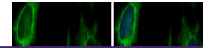

Product Datasheet

DECOR1 antibody (orb556625)

Description

Rabbit polyclonal antibody to DECR1


Species/Host

Rabbit

Reactivity

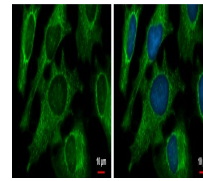
Human, Mouse, Rat

Conjugation

Unconjugated

Tested

ICC, IHC-P, WB

Applications


Immunofluorescence analysis of HeLa cell...

Immunogen

Full length human DECR1 Recombinant protein.

Target

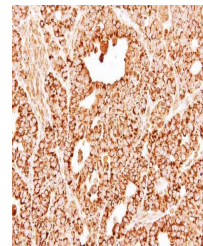
DECR1

Preservatives

0.01% Thimerosal. 0.1M Tris-Glycine (pH7), 10% Glycerol

Form/Appearance

Liquid: 0.1M Tris, 0.1M Glycine, 10% Glycerol (pH7). 0.01% Thimerosal was added as a preservative.



Immunohistochemical staining of NCI-N87 ...

Concentration

1 mg/ml

Storage

Store as concentrated solution. Centrifuge briefly prior to opening vial. For short-term storage (1-2 weeks), store at 4°C. For long-term storage, aliquot and store at -20°C or below. Avoid multiple freeze-thaw cycles.

Note

For research use only

Application notes

Positive control: Mouse liver , HepG2 , Rat heart

Isotype

IgG

Clonality

Polyclonal

Purity

Purified by antigen-affinity chromatography.

MW

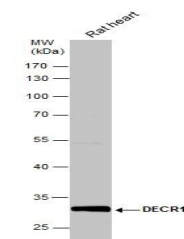
36

Uniprot ID
[Q16698](https://www.uniprot.org/uniprot/Q16698)
Dilution Range

WB: 1:5000-1:20000 , IF: 1:100-1:1000 , IHC-P: 1:100-1:1000

Expiration Date

12 months from date of receipt.



Western blot analysis of Rat tissue usin...