
Product Datasheet

beta A4 Crystallin antibody (orb556616)

Description

Rabbit polyclonal antibody to beta A4 Crystallin


Species/Host

Rabbit

Reactivity

Human, Mouse

Conjugation

Unconjugated

Tested

ICC, WB

Applications
Immunogen

Recombinant protein encompassing a sequence within the center region of human beta A4 Crystallin. The exact sequence is proprietary.

Target

beta A4 Crystallin

Preservatives

0.01% Thimerosal. 0.1M Tris-Glycine (pH7), 10% Glycerol

Form/Appearance

Liquid: 0.1M Tris, 0.1M Glycine, 10% Glycerol (pH7). 0.01% Thimerosal was added as a preservative.

Concentration

1 mg/ml

Storage

Store as concentrated solution. Centrifuge briefly prior to opening vial. For short-term storage (1-2 weeks), store at 4°C. For long-term storage, aliquot and store at -20°C or below. Avoid multiple freeze-thaw cycles.

Note

For research use only

Application notes

Positive control: Mouse brain , 293T , A431 , HeLa , HepG2 , H1299

Isotype

IgG

Clonality

Polyclonal

Purity

Purified by antigen-affinity chromatography.

MW

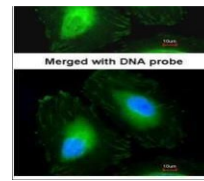
22

Uniprot ID
[P53673](https://www.uniprot.org/protein/P53673)
Dilution Range

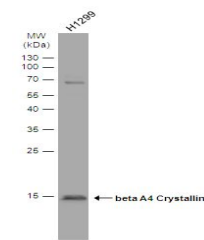
WB: 1:500-1:3000 , IF: 1:100-1:1000

Expiration Date

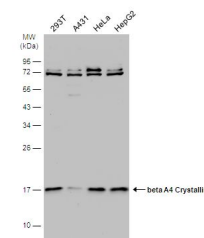
12 months from date of receipt.



Immunofluorescence analysis of HeLa cell...



Western blot analysis of Whole cell extr...



Western blot analysis of Various whole c...