

---

## Product Datasheet

### arginase 1 Antibody (orb556594)

**Description**

Rabbit polyclonal antibody to Arginase 1

**Species/Host**

Rabbit

**Reactivity**

Human, Mouse, Rat

**Conjugation**

Unconjugated

**Tested Applications**

ELISA, FACS, ICC, IHC-Fr, IHC-P, IP, WB

**Immunogen**

Full length human Arginase 1 Recombinant protein.

**Target**

Arginase 1

**Preservatives**

0.025% ProClin 300, 1XPBS pH 7, 1% rAlbumin, 20% Glycerol

**Form/Appearance**

Liquid: 1XPBS, 20% Glycerol (pH7). 0.025% ProClin 300 was added as a preservative.

**Concentration**

1.33 mg/ml

**Storage**

Store as concentrated solution. Centrifuge briefly prior to opening vial. For short-term storage (1-2 weeks), store at 4°C. For long-term storage, aliquot and store at -20°C or below. Avoid multiple freeze-thaw cycles.

**Note**

For research use only

**Application notes**

Positive control: HepG2

**Isotype**

IgG

**Clonality**

Polyclonal

**Purity**

Purified by antigen-affinity chromatography.

**MW**

35

**Uniprot ID**

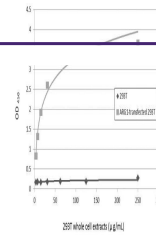
**P05089**

**Dilution Range**

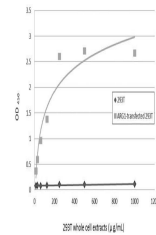
WB: 1:500-1:3000, IF: 1:100-1:1000, IHC-P: 1:100-1:1000, IHC-Fr: 1:100-1:1000, FACS: 1:50-1:200, IP: 1:100-1:1000, ELISA: 1:1000-1:10000

**Expiration Date**

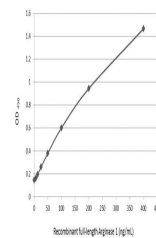
12 months from date of receipt.



Line graph illustrates about the Ag-Ab r...



Line graph illustrates about the Ag-Ab r...



Line graph illustrates about the Ag-Ab r...