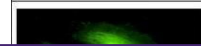

Product Datasheet

PDE6D antibody (orb556593)

Description

Rabbit polyclonal antibody to PDE6D


Species/Host

Rabbit

Reactivity

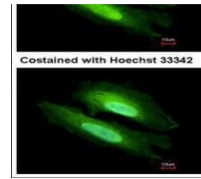
Human, Mouse

Conjugation

Unconjugated

Tested Applications

ICC, IHC-P, WB



Immunofluorescence analysis of HeLa cell...

Immunogen

Full length human PDE6D Recombinant protein.

Target

PDE6D

Preservatives

0.025% ProClin 300. 1XPBS pH 7, 20% Glycerol

Form/Appearance

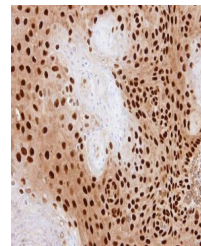
Liquid: 0.1M Tris, 0.1M Glycine, 10% Glycerol (pH7). 0.01% Thimerosal was added as a preservative.

Concentration

1 mg/ml

Storage

Store as concentrated solution. Centrifuge briefly prior to opening vial. For short-term storage (1-2 weeks), store at 4°C. For long-term storage, aliquot and store at -20°C or below. Avoid multiple freeze-thaw cycles.



Immunohistochemical staining of SAS xeno...

Note

For research use only

Application notes

Positive control: mouse eye

Isotype

IgG

Clonality

Polyclonal

Purity

Purified by antigen-affinity chromatography.

MW

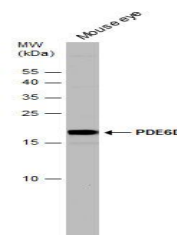
17

Uniprot ID
[O43924](https://www.uniprot.org/entry/O43924)
Dilution Range

WB: 1:500-1:20000 , IF: 1:100-1:1000 , IHC-P: 1:100-1:1000

Expiration Date

12 months from date of receipt.



Western blot analysis of Mouse tissue us...